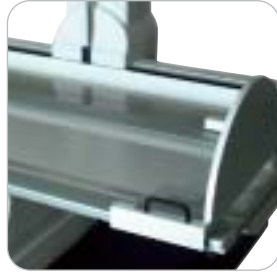


# x\_ray solutions



We understand that customers don't need just products, they want **solutions**





## index

[company profile](#)

[radio\\_fluoro](#)

[radiographic](#)

[various](#)

## company profile

ITALRAY Srl was founded in 1974 as the production branch of Marzocchi L&C SpA, a company formed in 1945 and still successfully operating in medical products distribution. ITALRAY headquarters and main production facility are located in Scandicci, in the greater Florence metro area. ITALRAY's core business is Medical Imaging with a special focus on Digital X-ray Imaging. ITALRAY activities range from product development to manufacturing, commercialization, installation, and service: we take care of our products throughout their entire lifecycle.

### X-RAY SOLUTIONS

ITALRAY's R&D department is always working on the cutting edge of technology to make sure that ITALRAY products are always technologically advanced, highly reliable, and with a very competitive total cost of ownership. ITALRAY offers to its customers worldwide a complete answer to their radiological needs: from the small mobile unit to X-ray generators, tilting tables, digital fluoroscopy systems, and up to complete digital radiology rooms. At ITALRAY we understand that customers don't need just products, they want SOLUTIONS.

### QUALITY

To ensure complete customer satisfaction, all ITALRAY processes, from design to production and service, are performed in compliance with the highest quality standards. Every single ITALRAY product is CE marked and ITALRAY's corporate quality system has been ISO 9001 certified since 1998. In 2001, as an evidence of the continuous commitment to total quality, ITALRAY was among the first companies to obtain the ISO 9001/2000 certification also known as VISION 2000. The radiologists of more than 50 countries worldwide are using ITALRAY products with complete satisfaction.

2006 - 2007 - 2008

1974 - 2005

- **\_x frame CCD**
- digital fluoroscopy system
- 1024x1024x12 bit
- up to 60 fps
- advanced processing algorithms
- DSA and cardio packages available
- large image archive
- anatomical acquisition modes
- complete DICOM connectivity



- **\_pixel HF**
- high frequency X-ray generator
- 100 kHz technology
- r/f or rad, 1 or 2 tubes
- up to 80 kW 1000 mA 150 kV
- continuous and pulsed fluoroscopy up to 60fps
- AEC, 9000rpm hss
- ergonomic console with exposure and safety info
- anatomical programs



- **\_clinodigit compact**
- remote controlled tilting table line
- 90/30 to 90/90
- elevating table, tomography
- image intensifier elevation system
- 100% microprocessor controlled
- analog or digital

- \_ tieton**
- multifunctional stand for DR applications
  - all exams and a complete room with only one DR detector
  - optimized workflow
  - horizontal and vertical operation
  - automatic centering/movements
  - minimal space requirements
  - especially studied for emergency departments
  - analog version also available



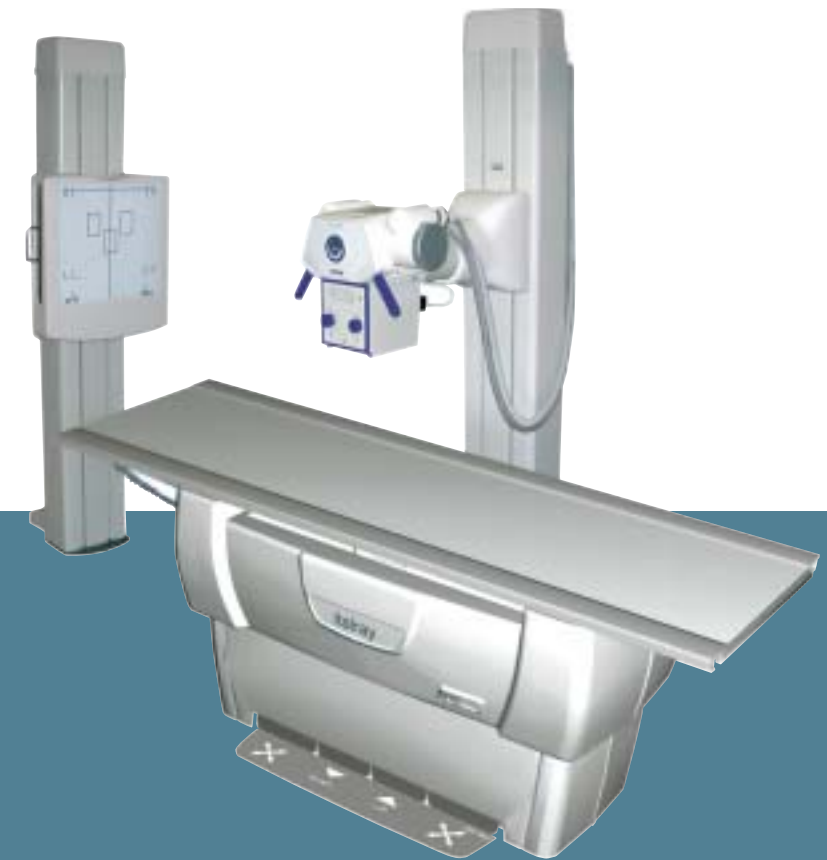
- \_ ith**
- image intensifier
  - 7" to 16" with ccd camera
  - 512x512 or 1024x1024, 12 bit

- \_ clinomat 2000**
- 90/15 conventional tilting table
  - image intensifier up to 12"
  - electronic or electromechanical spot film device

- \_ x frame DR**
- digital radiography system
  - exceptional image quality
  - 43cm x 43cm detector size
  - 3001x3001x14 bit acquisition matrix
  - image available within few seconds
  - extremely high productivity
  - reduced patient dose
  - anatomical acquisition modes
  - RIS integration
  - complete DICOM connectivity



\_ telescop  
 · ceiling suspended telescopic tube stand  
 · large area covered with standard rails  
 · motorized synchro movements



\_ bt- bte  
 · 4 way radiographic table  
 · fixed or variable height  
 · ergonomic controls  
 · DR ready

\_ statix – bs45  
 · vertical tube stand and bucky stand  
 · ergonomic controls  
 · DR ready



\_ cosmo x  
 · multipurpose radiographic system  
 · autocentered tube/buckygroup  
 · also available in brs version



\_ pixel IT  
 · 30 kW and 55 kW rad X-ray generator  
 · 100 kHz technology  
 · AEC, 9000rpm hss  
 · anatomical programs  
 · high technology and affordable price



- \_carmex
- mobile c-arm
  - 7", 9", or 12" image intensifier
  - fixed or rotating anode
  - wide range of digital memories available
  - DICOM connectivity



- \_mammograph plus
- high-end mammographic unit
  - 100 kHz X-ray generator
  - isocentric arm
  - automatic Rh/Mo filter
  - bi-angular dual-microfocus X-ray tube
  - integrated operator shielding system
  - zero-point technique
  - digital biopsy available
  - large number of available accessories

- \_mammograph
- mammographic unit
  - high frequency X-ray generator
  - zero-point technique
  - dual-microfocus X-ray tube
  - digital biopsy available
  - large number of available accessories
  - competitive cost of ownership



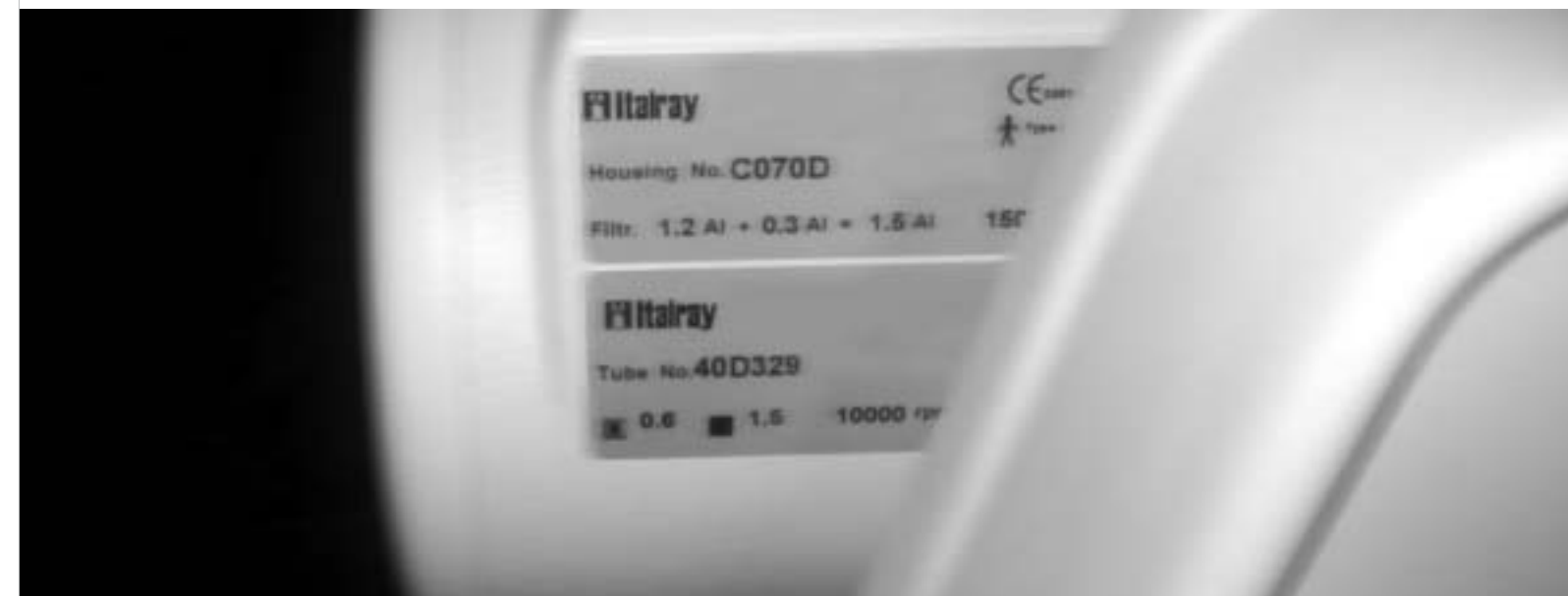
- \_compact
- mobile radiographic system
  - up to 30 kW
  - fixed or rotating anode

## service

Radiological systems typically have a long life span and need to be always maintained in perfect conditions. At ITALRAY we are perfectly aware of this need and our experienced service engineers will follow all ITALRAY systems and keep them always in fully working conditions both directly and via remote diagnostics.

ITALRAY service department is famous for its extremely fast response time and very accurate interventions. This is also made possible by the always fully stocked spares warehouse. In addition to that, ITALRAY carries an inventory of numerous X-ray tube types and models, both ITALRAY branded and from other major producers, and is capable to fulfill any X-ray tube necessity that may arise.

ITALRAY can also offer a wide range of service plans ranging from periodical inspections and checkups, up to complete full risk packages. Whichever the customer needs are, there is always an ITALRAY service plan that best fits them.





ITALRAY Srl  
Via del Parlamento Europeo, 9D  
50010 Scandicci (Florence)  
Italy

Tel +39 055 7228511  
Fax +39 055 7228512  
info@italray.it  
www.italray.it

